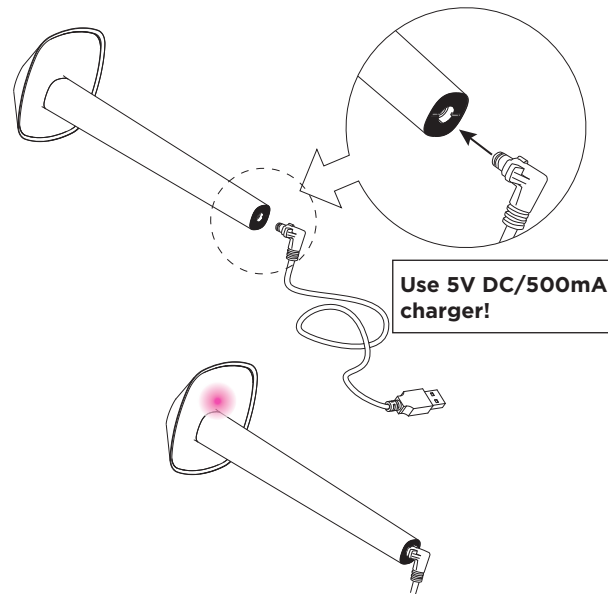
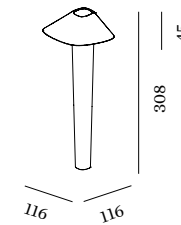


# REVER DINING

INSTALLATION INSTRUCTIONS | DECEMBER 2022



## DIMENSIONS



REVER DINING

## POWER

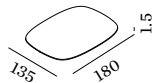
The luminaire is powered by a built-in 3.7V/4000mA lithium battery. The luminaire is to be charged with a 5V DC/500mA constant voltage power supply. It takes 10 hours for the luminaire to be fully charged. The luminaire can work continuously for 8 hours after a full charging. During the charging process the luminaire is operational. Charge at least once every three months to maintain battery performance. Do not pull out the connector while the battery is charging as, this might damage the battery or reduce the life time of the battery.

## INDICATOR LIGHTS

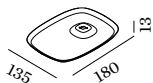
When charging the red LED indicator light is on. When charging is completed, the red LED indicator light goes off. When the voltage of the battery is too low (lower than 3.3V), the yellow LED indicator light is on. When the battery voltage is below 3.0V, the luminaire goes into sleep mode. When in sleep mode, the luminaire will not switch on and the yellow indicator light will flash 5 times.

## SWITCH ON/OFF AND DIMMING

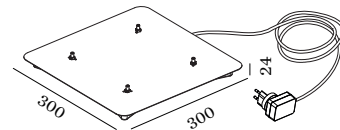
The touch switch and touch dimmer function is in the luminaire cover's metal top. The luminaire can be controlled (switching on/off and dimming) by touching the luminaire's top. Touch for 3 seconds to turn on the light. The brightness of the light will be as same as the previous time. When switched on, touch the luminaire's top for less than 1 second to change brightness in either low, middle or high output. Touch for 3 seconds to turn off the light.



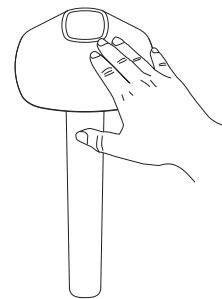
MAGNETIC FLAT PLATE



SINGLE CHARGING TRAY WITH MAGNETIC FIX

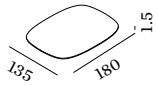


MULTIPLE CHARGER 4 PIECES

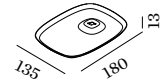
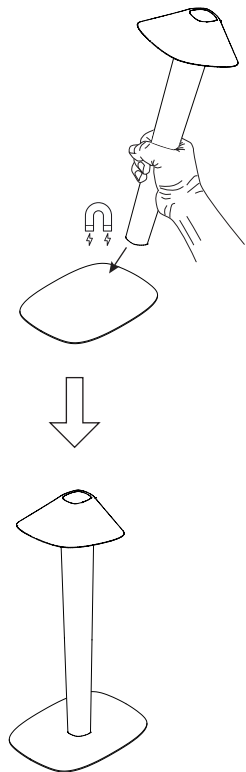


# REVER DINING

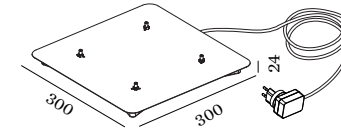
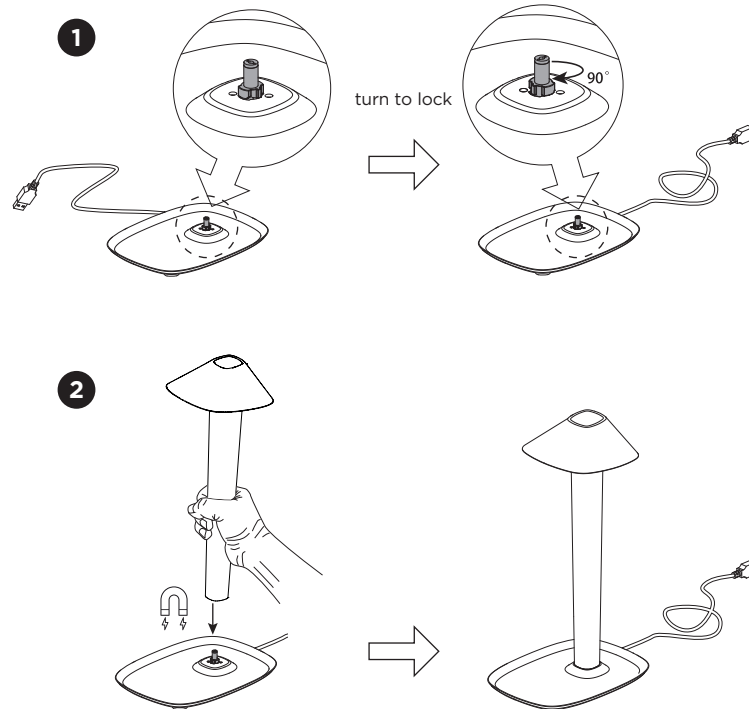
INSTALLATION INSTRUCTIONS | DECEMBER 2022



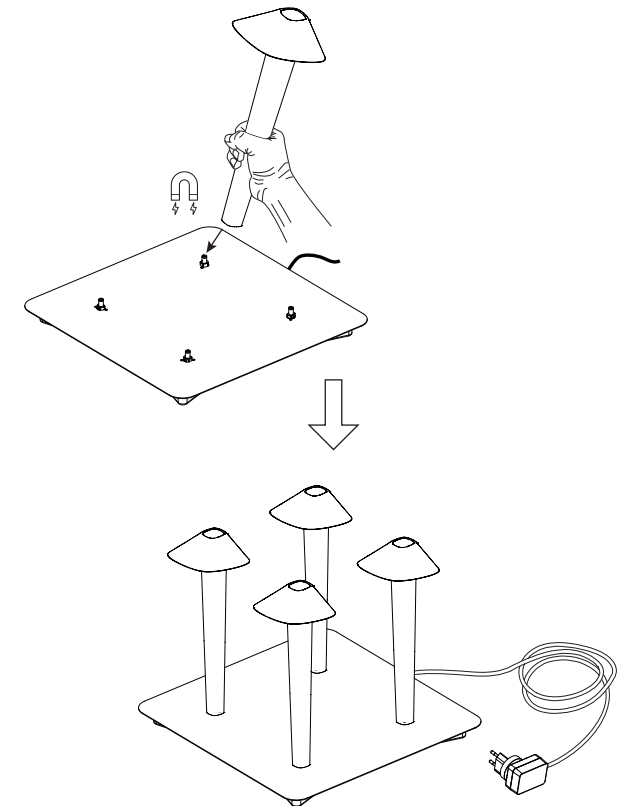
MAGNETIC FLAT PLATE



SINGLE CHARGING TRAY WITH MAGNETIC FIX



MULTIPLE CHARGER 4 PICES

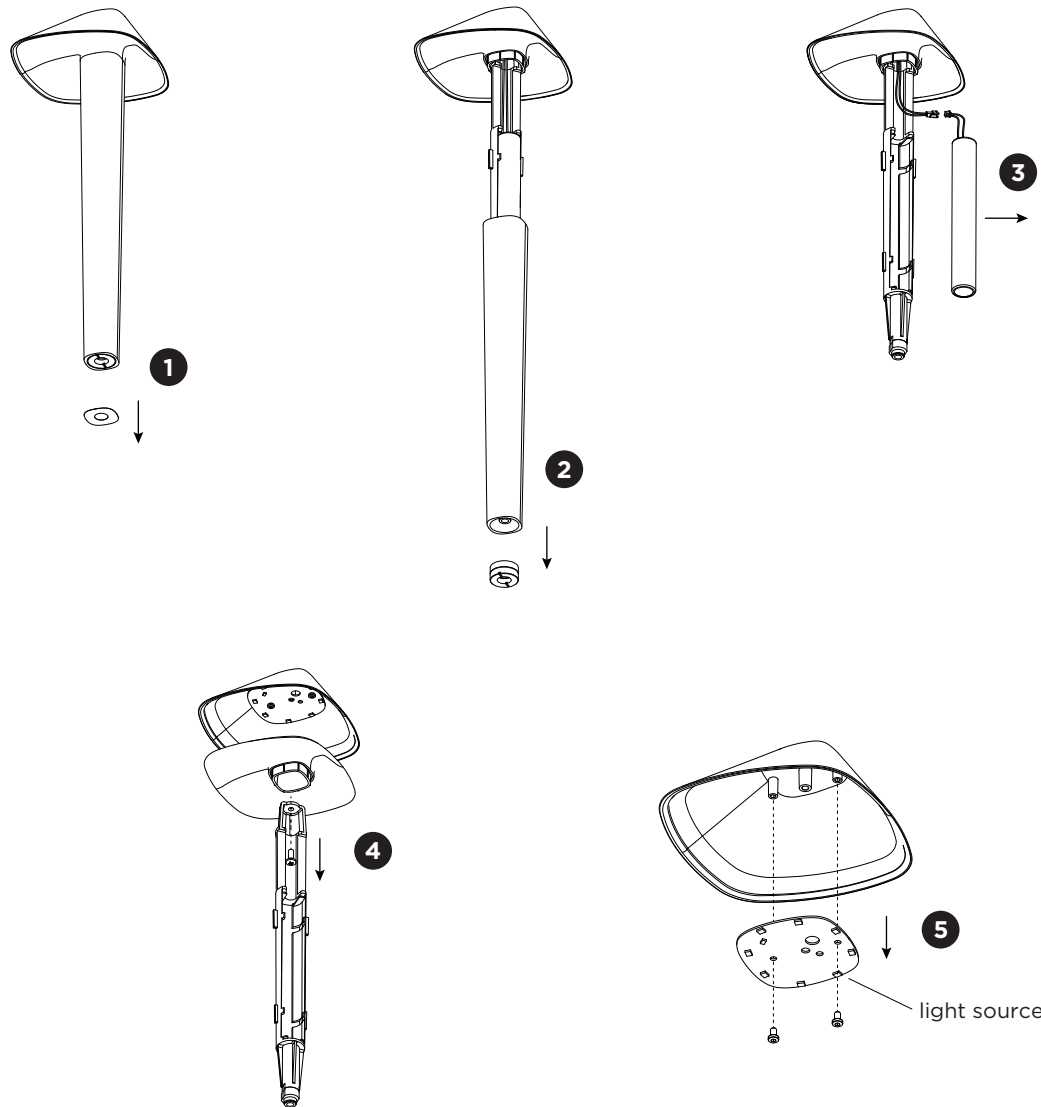


WEVER & DUCRÉ  
LIGHTING

WEVER & DUCRÉ BV  
Spinnerijstraat 99/21, 8500 Kortrijk, Belgium  
weverducre.com

# REVER DINING

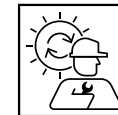
INSTALLATION INSTRUCTIONS | DECEMBER2022



## DISMOUNTING AND RECYCLING INSTRUCTIONS

### Light source & battery

- 1 Remove the bottom pad.
- 2 Unscrew the magnet to remove the pole.  
(possible to need a little force)
- 3 Cut off the cable tie and unplug the connector to remove the battery.
- 4 Unscrew the screw, remove the cable tie and remove the battery frame and diffuser.
- 5 Unscrew the light source and cut the cables to remove it.



The light source is replaceable by an authorized professional.  
For advice contact your Wever & Ducré customer service contact point.

This luminaire contains a light source with the corresponding energy class:

colour temperature	Energy class
2700K	A ↑ G F
2200K	A ↑ G G