



PROJECT

---

TYPE

---

NOTES

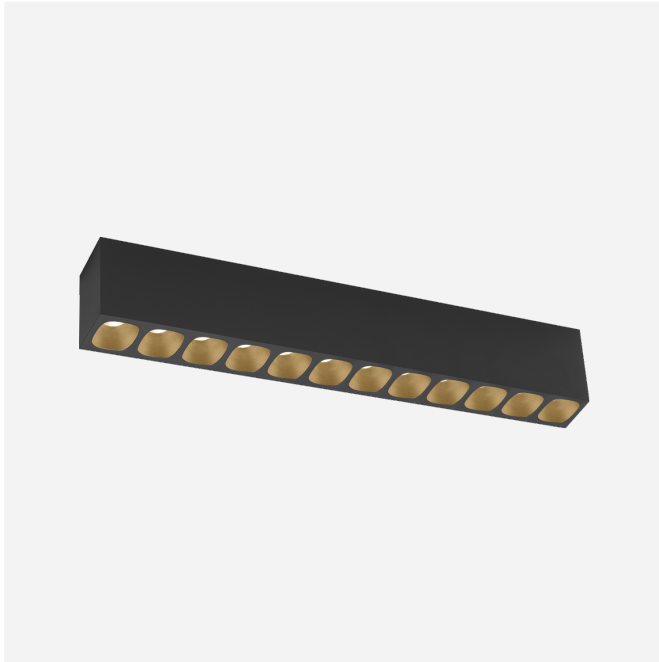
---

QUANTITY

---

DATE

---



Rectangular ceiling surface mounted downlight made from die-cast aluminium; surface Black Matt + Champagne; with COB (Chip on Board) technology for maximum efficiency; phase-cut dim; light colour 3000 K; binning initial MacAdam  $\leq 3$  SDCM; CRI  $\geq 90$ ; beam angle 28°; degree of protection IP20; Class 1; UGR  $\leq 13$ ; driver included; light source replaceable by Wever & Ducré or by a professional with explicit authorization; control gear replaceable by end-user;

**GENERAL**

Ceiling  
 Surface  
 Black Matt + Champagne  
 IP20  
 Interior  
 2000 lm  
 CIE flux code: 98 100 100 100  
 100

**LED**

3000 K  
 CRI  $\geq 90$   
 L80 / 50000h  
 initial MacAdam  $\leq 3$  SDCM

**OPTICAL**

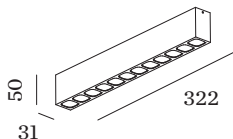
Standard  
 beam angle 28°

**ELECTRICAL**

phase-cut dim  
 220 - 240 V  
 system 26.8 W  
 Class 1

**PHYSICAL**

length 322 mm  
 width 31 mm  
 height 50 mm  
 0.38 kg



[129954CH5] The technical data represent rated values for an ambient temperature of 25°C. The data values for the luminous flux are initially subject to a tolerance of +/- 10%, those for the electrical connected load are initially subject to a tolerance of +/- 10%, and those for the colour temperature are initially subject to a tolerance of +/- 150 K. No liability is assumed for typographical or printing errors. The general terms and conditions of Wever & Ducré BV apply.