



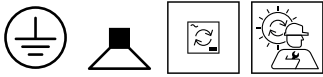
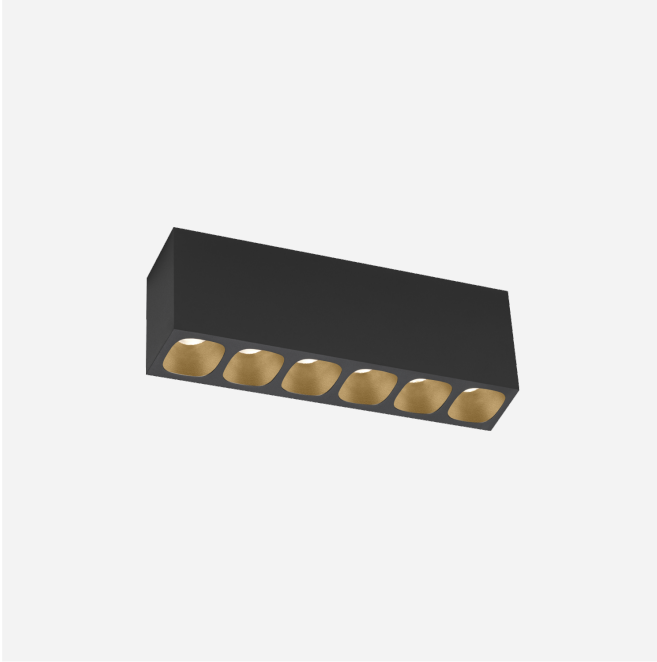
PROJECT

TYPE

NOTES

QUANTITY

DATE



Rectangular ceiling surface mounted downlight made from die-cast aluminium; surface Black Matt + Champagne; with COB (Chip on Board) technology for maximum efficiency; phase-cut dim; light colour 2700 K; binning initial MacAdam ≤ 3 SDCM; CRI ≥ 90 ; beam angle 28°; degree of protection IP20; Class 1; UGR ≤ 13 ; driver included; light source replaceable by Wever & Ducré or by a professional with explicit authorization; control gear replaceable by end-user;

GENERAL

Ceiling _____
 Surface _____
 Black Matt + Champagne _____
 IP20 _____
 Interior _____
 960 lm _____
 CIE flux code: 98 100 100 100 _____
 100 _____

LED

2700 K _____
 CRI ≥ 90 _____
 L80 / 50000h _____
 initial MacAdam ≤ 3 SDCM _____

OPTICAL

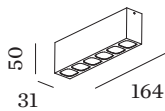
Standard _____
 beam angle 28° _____

ELECTRICAL

phase-cut dim _____
 220 - 240 V _____
 system 13.4 W _____
 Class 1 _____

PHYSICAL

length 164 mm _____
 width 31 mm _____
 height 50 mm _____
 0.21 kg _____



[129854CH3] The technical data represent rated values for an ambient temperature of 25°C. The data values for the luminous flux are initially subject to a tolerance of +/- 10%, those for the electrical connected load are initially subject to a tolerance of +/- 10%, and those for the colour temperature are initially subject to a tolerance of +/- 150 K. No liability is assumed for typographical or printing errors. The general terms and conditions of Wever & Ducré BV apply.