



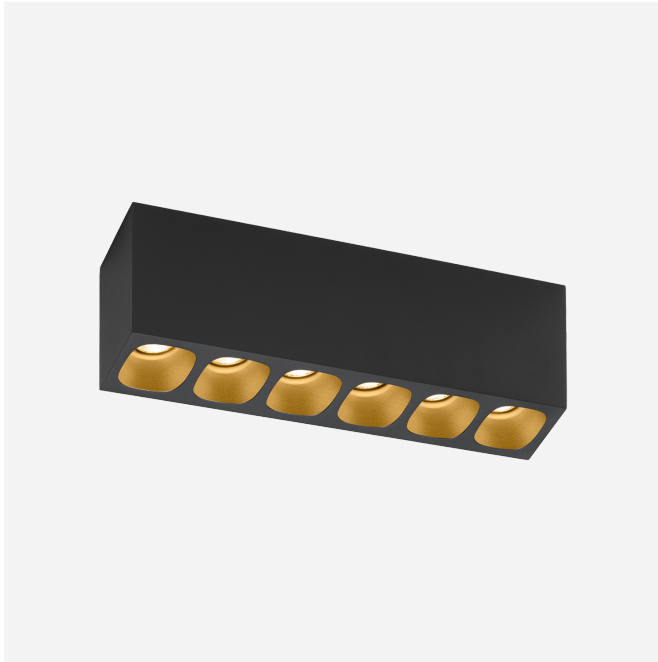
PROJECT

TYPE

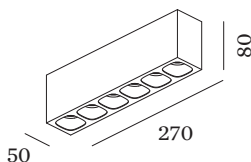
NOTES

QUANTITY

DATE



Rectangular ceiling surface mounted downlight made from die-cast aluminium; housing Black Matt powder coated; matt texture; with reflector in Gold wet painted; matt smooth; with COB (Chip on Board) technology for maximum efficiency; phase-cut dim; light colour 3000 K; binning initial MacAdam ≤ 2 SDCM; CRI ≥ 90 ; degree of protection IP20; Class 1; UGR ≤ 13 ; VDU compatible workplace luminaire according to DIN EN 12464-1; luminance above $65^\circ \leq 1500$ cd/m²; driver included; optional honeycomb louver available, to reduce glare; light source replaceable by Wever & Ducré or by a professional with explicit authorization; control gear replaceable by end-user;



GENERAL

Ceiling _____
 Surface _____
 Black Matt + Gold _____
 RAL 9005 ^a _____
 IP20 _____
 Interior _____
 2100 lm _____
 CIE flux code: 99 100 100 100 _____
 100 _____

LED

3000 K _____
 CRI ≥ 90 _____
 L70 / 55000h _____
 initial MacAdam ≤ 2 SDCM _____

OPTICAL

Standard _____
 beam angle 32° _____

ELECTRICAL

phase-cut dim _____
 220 - 240 V _____
 system 28.3 W _____
 Class 1 _____

PHYSICAL

length 270 mm _____
 width 50 mm _____
 height 80 mm _____
 0.8 kg _____

^a Colour may deviate slightly due to production conditions.

[151664K5] The technical data represent rated values for an ambient temperature of 25°C. The data values for the luminous flux are initially subject to a tolerance of +/- 10%, those for the electrical connected load are initially subject to a tolerance of +/- 10%, and those for the colour temperature are initially subject to a tolerance of +/- 150 K. No liability is assumed for typographical or printing errors. The general terms and conditions of Wever & Ducré BV apply.



Maintenance Factor

Operating Time [h]	10.000	20.000	30.000	40.000	50.000
LLMF	0.9	0.88	0.85	0.83	0.81
LSF	1	1	1	1	1

MF	$LMF \times RSMF \times LLMF \times LSF$	RSMF ^a	Room Surface Maintenance Factor
MF	Maintenance Factor	LLMF	Lamp Lumens Maintenance Factor
LMF ^a	Luminaire Maintenance Factor	LSF	Lamp Survival Factor

^aAccording to "CIE 97, Maintenance of indoor electric lighting systems", 2005, ISBN 3-900-734-34-8. The values must be determined by the planner.

OPTICAL ACCESSORIES

Honeycomb Louver

Type	Colour	Ø (MM)	Item number
BLIEK PETIT CENO LECA PIRRO	Black	29	90051131